

ROCK ENERGY NEWS

FOR ROCK ENERGY COOPERATIVE MEMBERS

www.rock.coop

May 2017

It Pays to be a Co-op Member

Capital Credits Distributed on Members' May Statements

If you take a close look at your May Rock Energy Cooperative statement, you'll notice one of the many benefits of your co-op membership.

Unlike other utilities, your co-op exists to make sure your needs are always met, not to make a profit. As a member, you share in the profits in the form of capital credits.

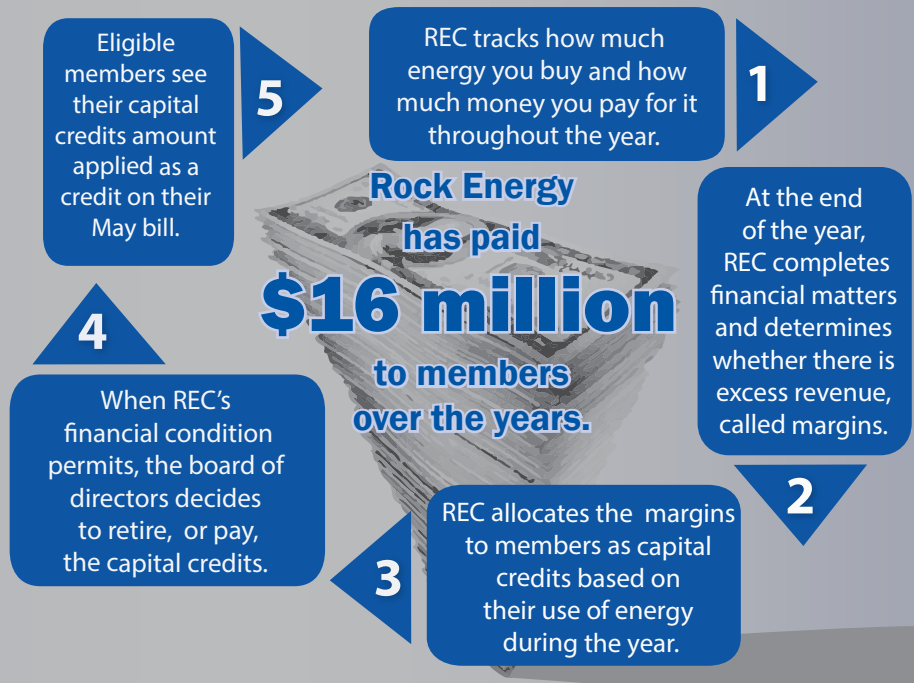
The cooperative works hard every day to keep your rates as low as possible. But when there are profits, they go back to you. Capital credits are based on usage, so the more energy you purchase, the more capital credits are earned and eventually returned to you.

In 2017, Rock Energy is distributing more than \$800,000 in capital credits to current members on their May statements and over \$200,000 to past members. Since it was founded 81 years ago, more than \$16 million has been paid back to past and current members.

Your May statement shows your share of the co-op's 2016 earnings as well as your percentage credit for the current and past years' allocations. The statement also shows your capital credits balance, which represents your equity in the co-op. That money is used to maintain and upgrade the system and

How Do Capital Credits Work?

Because Rock Energy Cooperative operates at cost, any excess revenues, called margins, are returned to members in the form of capital credits.



repay associated indebtedness.

"Allocating and retiring margins to members helps distinguish energy cooperatives from investor-owned utilities," said Shane Larson, chief execu-

tive officer for Rock Energy. "We're proud to support our communities by putting money back into the local economy and into the pockets of those we serve."

Account Number	Cycle	Service Location	Location	Billing Date	District
00000000	01	12345 Any Street	1234567	04/12/2017	8

Serv Type	Rate	Meter #	Reading Dates Prev	Pres	Meter Readings Prev	Pres	Multiplier	BTU Factor	Usage	Code	Units
Electric	100	00000000	02/28/17	03/30/17	34,653	35,518	1		865	A	KWH

CURRENT ELECTRIC CHARGES	AMOUNT
Facilities Charge	\$ 13.25
Energy Charge 865 kwh @ .09200	79.58
Power Cost Adj. 865 kwh @ .00189	1.63
Capital Credit Retirement	23.46CR
Non-Taxable Public Benefits	1.33
Total Current Electric Charges	\$ 72.33

Rock Energy is distributing more than \$1 million in capital credits during 2017. This member's share is shown on the statement and has been applied as a credit on the account.

Capital Credits Allocation and Retirement/Credit Activity is as follows:

Beginning Capital Credits Balance:	\$717.74
2016 Allocation:	\$64.33 - Your Proportional Share of 2016 Earnings
2017 Retirement Amount:	\$23.46 - Portion of Your Capital Credits Applied to This Bill
Ending Capital Credits Balance:	\$758.61

In this sample bill, the member's share of 2016 earnings is \$64.33. The member's 2017 retirement amount of \$23.46 is applied to the current bill as a credit. The ending capital credits balance is the amount of equity the member has in the co-op and is used to help meet ongoing operational needs of Rock Energy.

Rock Energy Night at the Ballpark Saturday, June 10

Co-sponsored by Touchstone Energy Cooperatives

- Beloit Snappers vs. Quad City River Bandits
- Game starts at 7 p.m. Gates open at 6.
- The first 30 kids win a special gift.
(Must be accompanied by adult member.)
- Come early for player autographs.
- Stay late for spectacular fireworks after the game.

Inexpensive tickets for members!

Tickets are \$2 each (\$8 value) and must be purchased in advance at either REC office. Good for any 2017 regular season game.

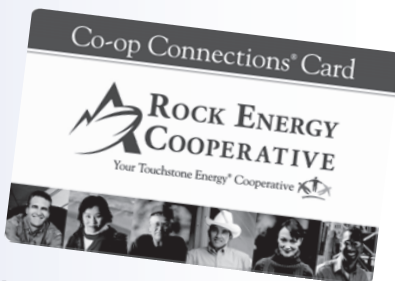


Incredible food prices!

Hot dog, chips, and soda – \$2

Pizza and soda – \$2

Show your Co-op Connections Card at the ballpark on June 10 to buy reduced-price food vouchers. If you don't have a card, stop at our office to get yours free!



Have a Safe Memorial Day!

Rock Energy Cooperative offices will be closed on Monday, May 29, in observance of Memorial Day. We will reopen at 7:30 a.m. Tuesday, May 30. Members can make payments in the drop boxes at both offices throughout the holiday weekend. Even though our offices are closed, standby crews are always available 24 hours a day. If you need to report a power outage, please call 866-752-4550.



Get Connected



Check out these great local deals offered with your Co-op Connections Card.

ABC Fire & Safety Inc., 2581 Park Ave., Beloit – 608-362-1634 – www.abcfirebeloitwi.com

Sales and service of fire extinguishers in southern Wisconsin and northern Illinois.



10% Off All New Fire Extinguishers

Reich Chiropractic Clinic, 1831 Blackhawk, South Beloit – 815-389-1492 – www.reichchiropracticclinic.com

Eliminating Pain, Improving Wellness, Changing Lives. Complete family health care specializing in chronic and difficult cases. Free health care talks on the second and fourth Tuesday of each month. Special kids program every third Saturday. Wide variety of nutritional supplements and Biofreeze pain-relieving gel available. We're passionate about wellness—your wellness—on a structural, nutritional, and emotional level, so once you're out of pain—whether it's back pain, neck pain, headaches, extremity pain, or other problems—we'll teach you how to stay that way.



Free Consultation and Chiropractic Evaluation Examination

Healthy Savings Discounts

The same program that offers discounts at local merchants and has saved Rock Energy members more than \$132,000 on prescriptions also offers significant savings on dental, vision, hearing, lab and imaging services, and chiropractic work. To locate participating providers in your area, call 800-



800-7616 or go to www.rock.coop, click on the Co-op Connections Card, and look under the Healthy Savings tab. Be sure to have your Co-op Connections Card handy.

Current Deals

For a complete listing of current deals, visit www.rock.coop and click on the Co-op Connections Card.

ROCK ENERGY NEWS

Rock Energy Cooperative
(608) 752-4550 or (866) 752-4550

P.O. Box 1758
2815 Kennedy Rd.
Janesville, WI 53547-1758

P.O. Box 126
15229 Willowbrook Rd.
South Beloit, IL 61080

Shane Larson, Chief Executive Officer • Barbara Uebelacker, Editor