



Shane L. Larson,
Chief Executive Officer

MORE POWER TO YOU

OCTOBER IS NATIONAL CO-OP MONTH



When you think of October, pumpkins, Halloween and beautiful fall foliage naturally come to mind. But October is notable for another reason—it's National Co-op Month! This is the time of year when cooperatives across the country, including Rock Energy Cooperative, reflect on who we are and, more importantly, the members we serve.

Cooperatives are different than other types of businesses. They are conveners for the common good. Thirteen Rock County farmers made history in 1936 when they laid the groundwork for rural residents to get electricity and improve the quality of their lives. The history of the Rock County Electric Cooperative Association, now Rock Energy Cooperative, is filled with milestones, significant happenings, and thousands of smaller achievements that have taken place since 1936. Today, Rock Energy Cooperative exists to provide safe, reliable and affordable energy to you, the members of the co-op. Equally important is our mission to enrich the lives of the members we serve.

As a co-op, we are well-suited to meet the needs of the community because we are locally governed. Rock Energy leadership team and employees live right here in the communities we serve. Our board of directors, who helps set long-term priorities for the co-op, live locally on co-op lines. These board members have been elected to the position by neighbors like you.

We know our members (you!) have a valuable perspective. That's why we are continually seeking your input. Whether through community events, our social media channels, or the annual meeting, we want to hear from you.

Our close connection to the community ensures we get a first-hand perspective on local priorities, thereby enabling

us to make more informed decisions on long-term investments, such as the West Riverside Energy Center in Beloit Township.

As a Rock Energy member, you can participate in the democratic process by electing fellow

members to represent you on the board of directors. You also participate financially through our capital credits program. At the end of each year, any margins that exceed actual costs are allocated to members in the form of capital credits. Since the co-op was founded 85 years ago, about \$22 million has been returned.

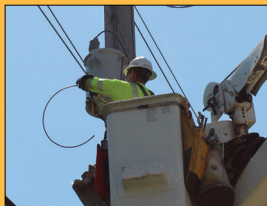
As a not-for-profit business, members know they can trust their co-op because it was created to deliver on the promise of providing safe, reliable, and affordable energy to members—not to generate money for shareholders.

The focus on community values mixed with the cooperative business model makes co-ops stronger and sets us apart from traditional power companies. That's the cooperative difference!

Please let us know if we can do anything to improve our service to you.



MY CO-OP



**COMMUNITY ORIGINATED
COMMUNITY LED
FOCUSED ON OUR MEMBERS**

**October is:
NATIONAL CO-OP MONTH!**



Rock River Thresheree

Bringing Together History & Community in Rock County

For the past 65 years, the Rock River Thresheree, a Rock Energy Cooperative member, has been putting on a display of field machinery power like no other—a display that attracts thousands of attendees from southern Wisconsin and surrounding states and areas.

Held annually on Labor Day weekend at Thresherman's Park on Cox Road in Edgerton (Rock County / just off of I-90), the main feature this year was the "Orphans & Oddballs" event that put on display unique pieces of equipment left over from the past, a past when several different tractor manufacturers were prevalent.

"We had some very rare and unique steam powered pieces that were featured this year," said Todd Ligman, President of the Rock River Thresheree. "This is the 65th year of the event, and the special feature this year is steam powered equipment, which is what was used right before the industrial revolution."

Other attractions included horse plowing, threshing, the blacksmith shop, and a sorghum and grist mill. Children's activities were also available, including candle-making, coloring, a big corn pile hunt, and pony rides.

The Thresheree park is staffed by members and volunteers. Members donate thousands of hours a year to maintain and update the park. It is a Non Profit 501(c) (3) organization, and all proceeds are used to improve the facility.

"The Thresheree provides a great place for people to discover and appreciate the efforts of others in the community who have created and been a part of their unique and rich history. I have enjoyed many visits to the Rock River Thresheree over the years. The electric cooperative was borne of the same spirit, creativeness and entrepreneurial drive. Hand-in-hand, trading on their time and labor, they have worked together building a community that has helped people make better lives for themselves."

**- Wendell Boyer, Rock Energy
Director (District 8)**

HISTORY OF THE ROCK RIVER THRESHEREE

John Horton purchased his first engine when he was 16 years old and, from that time on, he always had a steam engine or two around. About 1955, he purchased an Advance Rumely from the rural Stoughton threshing ring. The engine had been parked after the last man able to operate it passed away.

Horton, his son Jack, and his neighbor August Handtke repaired the engine and decided to run it for threshing that year. They invited the public, as well as local television and newsreel cameras to show up on the afternoon of Friday, July 27, 1956. About 100 spectators came, including reporters from the Edgerton Reporter, Janesville Gazette, Wisconsin State Journal, and other newspapers.

In 1958 and 1959, the show was, basically, a fundraiser for the local Fulton Church. In 1960, the church turned the show over to the steam enthusiasts and it was moved to the American Legion Park in Edgerton. That same year, the club was reorganized as Rock River Thresheree, Inc., and they held their first election of officers. The year 1961 marked the first land purchase (part of the present Threshermen's Park), and they were granted non-profit status in 1965.

REC DIRECTOR REFLECTS ON THRESHEREES OF THE PAST

Barb Miller, REC District 1 Director, said she's had the pleasure of attending the Rock River Thresheree in the past, and she found it to be "a remarkable experience."

"The Thresheree brings together over 100 years of power history from our early rural beginnings," said Miller. "Generations in families, grandparents, fathers and sons have worked tirelessly on restoring and preserving this history in the Rock River Thresheree park."

Miller said her dad, now 93, farmed all his life, and the only brand new piece of farm equipment he ever bought, she said, was in 1960, a D17 Allis-Chalmers tractor.

"That tractor was a valuable source of power and it was used daily by our family over the years," said Miller. "By 2001 my dad decided to do a full restoration, with the help of his son and grandson. That same year, the Thresheree featured Allis-Chalmers. My dad was quite proud of his tractor and participated in the 'Daily Parade of Power,' showing off his restoration at the Thresheree."

Miller went on to say that she believes that the success of the Rock River Thresheree is, in large part, because it's "built upon a foundation of generational family history in their rural communities."

A long-time connection with history, she said, is a way of life for the rural communities in southern Wisconsin. This special connection has been going on for many decades, she added, long before cooperatives began energizing these areas.

"Deep concern for preserving this way of life shows the pride in early rural family living," said Miller. "Individuals are passionate and have committed their lives to continuing the tradition in this yearly celebration, hoping to educate future generations. This unique one-of-a-kind experience has reached people far and wide, not just in the immediate area. I know a lot of people who have traveled from out of state to attend the

"The reason the Thresheree is so popular is because there is something for the entire family to enjoy, and it's part of the local history of Rock County and the State of Wisconsin. The success of our organization is firstly due to the dedicated members that do all the back end work. Secondly it is due to our wonderful volunteers and our gracious donors. The Rock River Thresheree is truly one of Rock County's hidden gems!"

**- Todd Ligman, President
Rock River Thresheree**



Pictured here is one of the many demonstrations from the 2019 Thresheree.



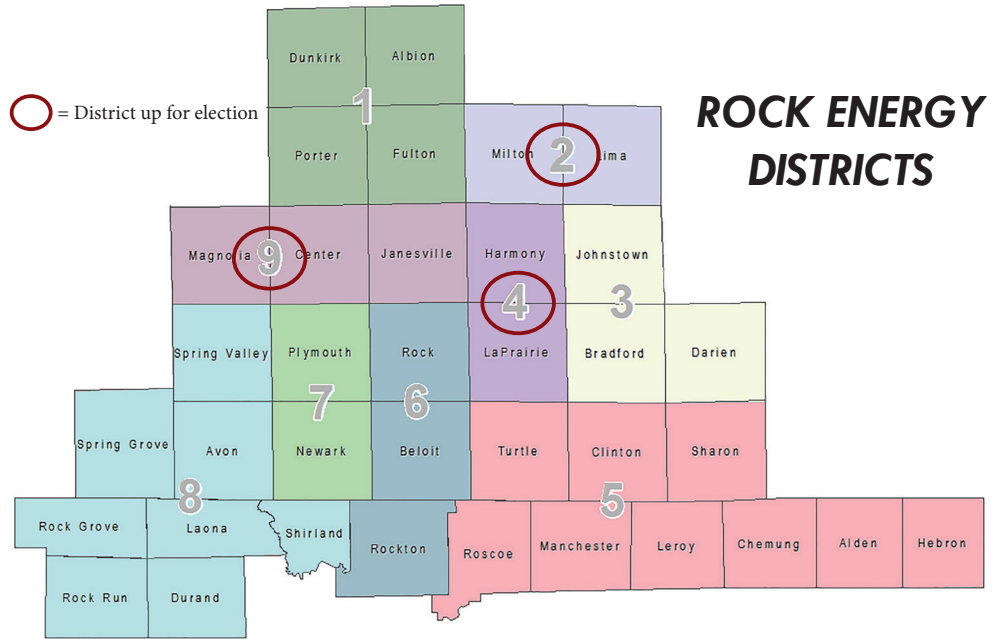
REC DIRECTOR NOMINATIONS OPEN

The Rock Energy Cooperative Nominating Committee will be selecting candidates to run for board of director positions that will be on the ballot at the 2022 annual meeting (date TBD).

DISTRICTS UP FOR ELECTION:

- **District 2:** Lima and Milton townships in Wisconsin.
- **District 4:** Harmony and LaPrairie townships and city of Janesville in Wisconsin.
- **District 9:** Center, Janesville, and Magnolia townships in Wisconsin.

Active members who are interested in running for a position on the REC Board of Directors must permanently reside in one of the areas up for election and meet all other qualifications. For more information, please contact the co-op at 866-752-4550, or send an e-mail to questions@rock.coop.



CANDIDATE SUBMISSION DEADLINE: NOV. 30, 2021

BUDGET PAYMENTS RECALCULATION CONDUCTED IN OCTOBER

Members on Rock Energy's Budget Billing plan will see their monthly payment amounts change with the statement they receive in November.

Budget payments are recalculated twice a year—in October and April—to help ensure that the amount you pay is similar to your true usage. We'll average the amount of energy you used in the

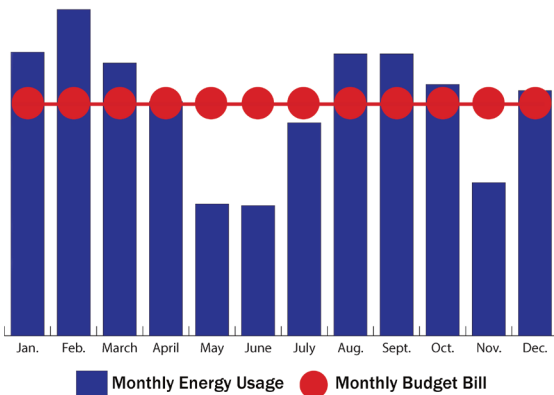
previous 12 months to determine your new budget payment.

Also taken into consideration is whether you had a credit or if your budget payment didn't quite cover the amount of energy used in the previous six months. Depending on your actual usage, your future budget amount could increase or decrease.

About 1,300 members are currently enrolled in Budget Billing. If you'd like to join them, our energy services manager suggests that now would be a good time as we approach the winter heating season. You will pay the same amount each month, avoiding higher than anticipated bills if the weather is exceptionally cold.

You are eligible for Budget Billing if you have received service from the co-op for at least six months and have a good credit history. Then you can pay your monthly bill however you choose—cash, check, credit card, mail, in person, drop box, or kiosk. Or better yet, sign up for Auto Pay to fully automate your energy payments, assuring that you'll never pay a late fee.

If you would like more information on these programs or want to sign up, please call Member Services at 866-752-4550 between 7:30 a.m. and 4 p.m. Monday through Friday, or email questions@rock.coop.



Shane Larson, CEO

P.O. Box 1758, 2815 Kennedy Rd., Janesville, WI 53547
P.O. Box 126, 15229 Willowbrook Rd., South Beloit, IL 61080
866-752-4550

Jonas Berberich, Editor



ROCK ENERGY COOPERATIVE
Empowering Members Since 1936